

2016 10 DAY KIMBERLEY COAST

# WILDLIFE EXPEDITION CRUISE

*1-10 August*



0409 886 350

[WWW.KIMBERLEYWHALES.COM.AU](http://WWW.KIMBERLEYWHALES.COM.AU)





*1-10 August 2016*

**\$7,500 PP TWIN SHARE**



Join Kimberley Wildlife Expedition Cruises onboard Kimberley Expeditions' "MV Oceania" for the trip of a lifetime on the rugged and remote Kimberley coast as we explore the wildlife and marine life of the Kimberley's islands and reefs, surrounded by the world's largest Humpback whale population.

The Kimberley coast is a marine area of global importance, recognized as being amongst the 4% least impacted oceans worldwide. Surrounding the thousands of islands that comprise the Buccaneer and Bonaparte Archipelagos are fringing reefs rich in corals and other marine organisms. The outer islands are important breeding grounds for various species of seabirds and turtles, and the entire area is rich



in cetaceans, including the recently discovered Dwarf Spinner dolphin, Bottlenose and Australian Humpback dolphins and the elusive Australian Snubfin dolphin.

On this voyage of discovery you'll visit areas rarely visited by other charter boats, including the Lacepede Islands and Adele Island, both significant



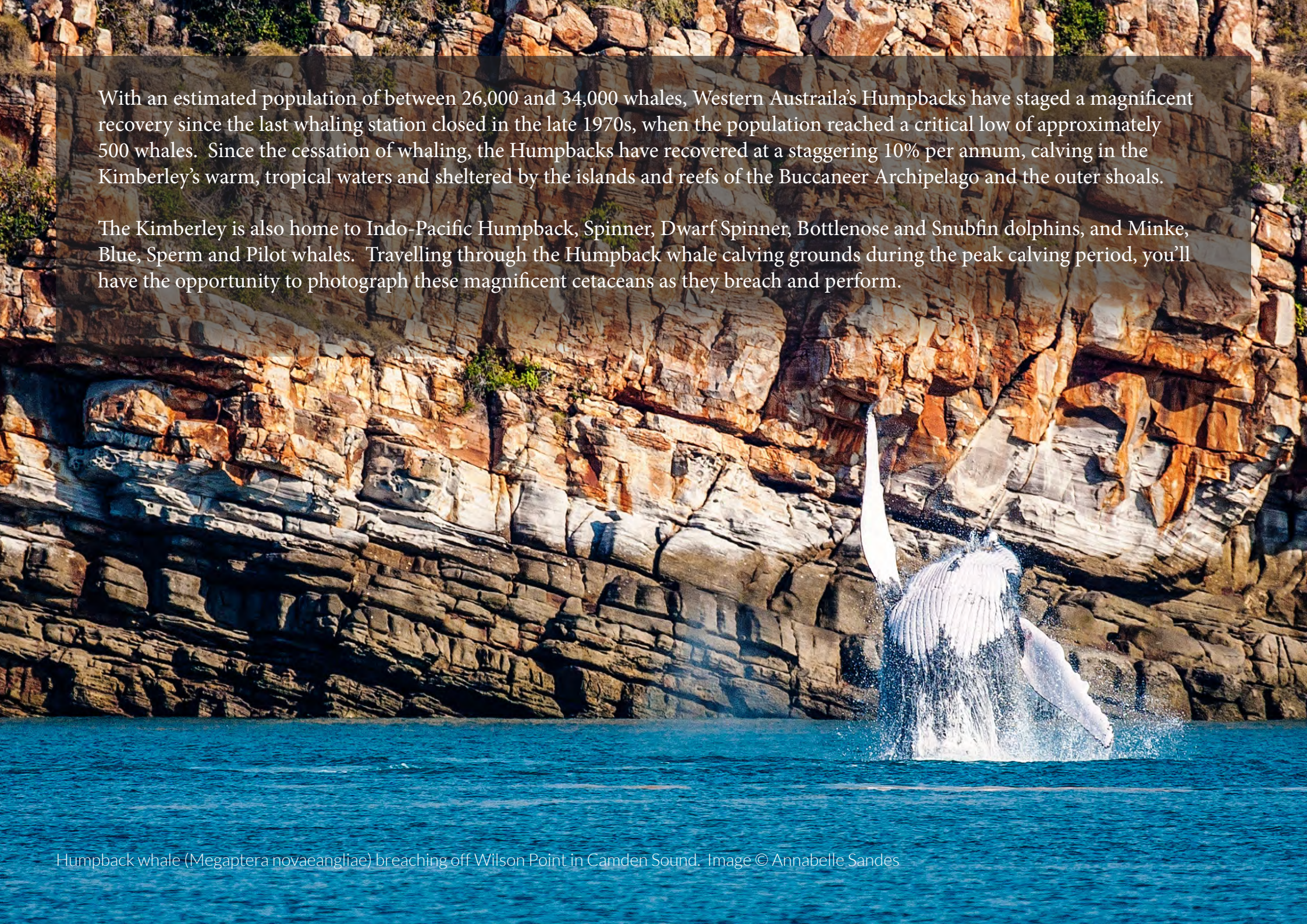
bird nesting sites, and Camden Sound, recently gazetted as the Kimberley's first inshore marine park in recognition of its importance as a Humpback whale nursery. You'll also visit Montgomery Reef, the world's largest inshore reef, the iconic and thrilling Horizontal Waterfalls, Dugong Bay, one of the jewels of the Kimberley coast, Augustus Island, one of the largest islands on the Kimberley coast, Camden Sound, and the Prince Regent River - home to Kings Cascades.

Tawny nurse shark, Talbot Bay



With an estimated population of between 26,000 and 34,000 whales, Western Australia's Humpbacks have staged a magnificent recovery since the last whaling station closed in the late 1970s, when the population reached a critical low of approximately 500 whales. Since the cessation of whaling, the Humpbacks have recovered at a staggering 10% per annum, calving in the Kimberley's warm, tropical waters and sheltered by the islands and reefs of the Buccaneer Archipelago and the outer shoals.

The Kimberley is also home to Indo-Pacific Humpback, Spinner, Dwarf Spinner, Bottlenose and Snubfin dolphins, and Minke, Blue, Sperm and Pilot whales. Travelling through the Humpback whale calving grounds during the peak calving period, you'll have the opportunity to photograph these magnificent cetaceans as they breach and perform.



Humpback whale (*Megaptera novaeangliae*) breaching off Wilson Point in Camden Sound. Image © Annabelle Sandes



The Kimberley is home to a diversity of wildlife including the Saltwater or estuarine crocodile (*Crocodylus porosus*), Freshwater crocodiles (*Crocodylus johnstonii*), goannas and water monitors, nearly 360 species of birds, and a variety of mammals, including the Monjon and Narbalek, both small macropods. Incredibly, there are thought to have been no species extinctions in the north Kimberley since white man arrived. The focus of our 2016 Wildlife cruises is the diverse and majestic wildlife of the north and west Kimberley coast. Led by photographers and naturalists Richard Costin and Annabelle Sandes, you'll have the opportunity to get up close to photograph some rare and unusual wildlife and birdlife.



Australian Bottlenose dolphins (*Tursiops aduncus*)



The Kimberley coast is nearly 13,000 km long including islets and embayments, and includes 2,633 charted islands.

ADELE ISLAND

CAMDEN SOUND

PRINCE REGENT RIVER

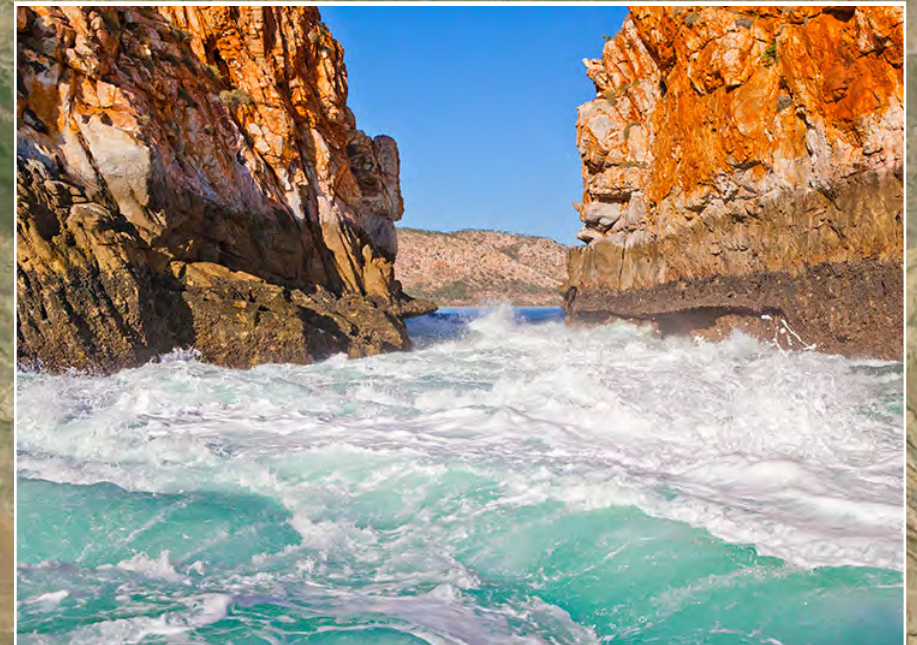
MONTGOMERY REEF

CAPE LEVEQUE

HORIZONTAL WATERFALLS

LACEPEDE ISLANDS

BROOME



Horizontal Waterfalls, Talbot Bay



# ITINERARY

## *1 August 2016*

8 am pick-up for your transfer to board the vessel Oceania - onboard you will meet your tour guides and crew who will take you through the events of the next 10 days. You'll receive an interpretive and knowledgeable account of local whale activity and migratory patterns while recording vital data. Cruise up the Dampier Peninsula past James Price Point, observing & recording our first Humpback whales, and keep an eye out for the newly discovered Dwarf Spinner dolphins, Australian Humpback dolphins and Bottlenose dolphins. If the weather is favorable we may be able to anchor and spend the night at the Lacepede Islands.

## *2 August 2016*

This morning we'll explore the fascinating Lacepede Islands, one of the most important Green Turtle breeding areas in the world, and a haven for thousands of shorebirds and seabirds including Brown boobies, Lesser frigate birds, Terns and Common noddies. The Lacepedes comprise four islands with a fascinating European history. In the afternoon we'll commence our passage to Adele Island, the most remote island on the Kimberley coast, visited by only a handful of vessels every year. As we near Adele you'll see flock after flock of seabirds returning to roost on the island.

## *3 August 2016*

Today we have a full day at Adele to explore the wonders of this amazing island and reef complex. With a rising tide we'll go ashore to explore the birdlife and marine life of Adele Island, named by Nicolas Baudin in 1803, and home to nesting pairs of Masked boobies and other shorebirds and seabirds. In the late afternoon, we'll enjoy drinks and nibbles on a remote shell strewn sandspit.

## *4 August 2016*

At sea. Enjoy a leisurely steam to Hanover Bay, at the mouth of the Prince Regent River. Overnight in Hanover Bay.

## *5 August 2016*

Awaken in beautiful Hanover Bay at the mouth of the Prince Regent River. We'll explore this beautiful River System visiting King's Cascades and Cathedral Falls. Overnight steam to Hall Point in Camden Sound



Masked boobies, Adele Island



Humpback whale breaching in Camden Sound





### *6 August 2016*

Camden Sound is one of the main maternity wards for the Kimberley's Humpback whales as they nurture their calves, sheltering behind its islands and reefs. Today we'll explore The Wailgwin Islands, try a spot of fishing around Rice Rocks and Hall Point, with an afternoon swim at Butterfly Gorge.

### *7 August 2016*

An early morning steam down to Montgomery Reef, Australia's largest inshore reef and one of the icons of the Kimberley coast. You'll cruise Montgomery's gutters on a falling tide as this massive reef complex appears to rise from the ocean. In the afternoon we'll explore the Traverse Island group, before steaming to Turtle Reef in Talbot Bay.

### *8 August 2016*

Up early this morning to explore the marine wonders of Turtle Reef in Talbot Bay, another massive reef complex lying between Molema Island and the mainland and rich in marine life. In the afternoon we'll take a thrilling ride through the iconic Horizontal Waterfalls before anchoring at the entrance to beautiful Dugong Bay.



*9 August 2016*

Wake up in beautiful Dugong Bay, one of the jewels of the Kimberley coast, surrounded by the Kimberley's rugged cliff faces. We'll cruise out of Dugong Bay through Yampi Sound, past the iron

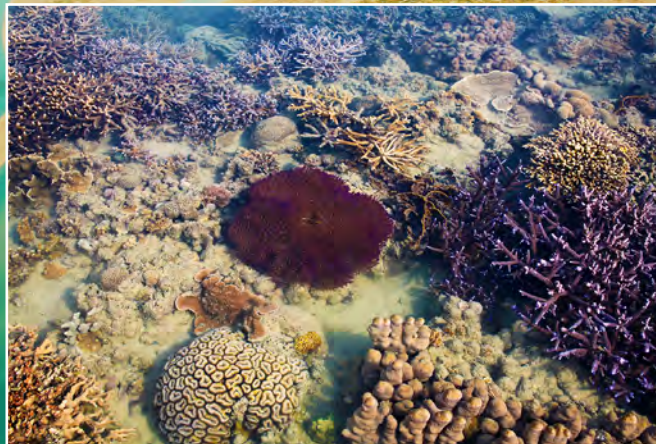
ore mines on Koolan and Cockatoo Islands, to Silvergull Creek, once a water source for Koolan Island and now home to The Squatter's Arms. In the afternoon we'll have a refreshing dip at Silica Beach, a gorgeous inlet with the whitest sand on the coast. Overnight steam towards Broome.

Please note: This itinerary is subject to change at the discretion of the skipper, depending on weather and tidal conditions. Strong winds, tides and currents may necessitate changes.

You will need to have a moderate level of fitness to undertake this tour.

*10 August 2016*

Having sailed overnight we continue our journey south to Broome passing the Lacepedes Islands onward down the coast of the Dampier Peninsular. We can enjoy plenty more whale sightings and hopefully see more dolphins, there are often large numbers of terns on this final leg of our journey for the bird enthusiast and we get lucky and see Wilson's Storm Petrel and a Streaked Shearwater. We will arrive in Broome around midday for transfer back to your hotel.



Turtle Reef, Talbot Bay



# MV Oceania



MV Oceania is a 27m catamaran boasting an exceptional 9m beam. The vessel is fully air-conditioned and sleeps 20 passengers, with 8 shared ablution facilities. She has the capacity to remain at sea for 90 days, with a desalination unit that can produce 5 tonnes of potable water per day, and extensive ship to shore communications. The top deck has an expansive 360° viewing area, perfect for spotting cetaceans.

Cruise speed 9.5 knots  
Top speed 12 knots

Facilities include high speed wireless NextG internet throughout the vessel when in NextG range (generally limited to the Dampier Peninsula - very occasional reception offshore).

## Accommodation

Bridge deck - 3 double cabins, 6 berth family cabin  
Main deck - 4 double cabins  
1 single berth

Each cabin features  
Standard double or 800mm wide single beds  
Storage shelves  
240V sockets  
Reading lights  
Under bed storage  
Air-conditioning





All expeditions and cruises are sold upon the following terms and conditions - Please note that failure to make due payment in respect of bookings or installments shall entitle Odyssey Vessel Management Pty Ltd to cancel a booking.

At any time following overdue payment, Odyssey Vessel Management Pty Ltd shall be entitled to consider a booking void and offer the booking to any other interested party.

Singles Share Policy - Cabin accommodation is based on double occupancy. If you are traveling alone, a same sex room mate may be assigned to your cabin.

Deposit - A completed booking form and a 20% non-refundable deposit are required to confirm your reservation aboard Oceania.

Final Payment - Final Payment is required no later than 60 days prior to departure. Failure to provide final payment 60 days prior to departure will result in cancellation of the booking and forfeiture of any deposit.

Cancellations - If a booking is cancelled less than 60 days prior to departure, or, if a passenger fails to arrive, the total cruise value is forfeited. Odyssey Vessel Management Pty Ltd cannot accept any responsibility for the actions of any carrier that might result in the purchaser failing to observe a booking condition. Odyssey Vessel Management Pty Ltd strongly recommends passengers arrange adequate cancellation insurance .

Insurance - Odyssey Vessel Management Pty Ltd strongly recommends passengers arrange adequate comprehensive travel insurance.

Liability Conditions - Odyssey Vessel Management Pty Ltd is an adventure travel organization. The nature of cruises offered, means that passengers may encounter physical discomfort and even danger. This being the case, it is expected that every passenger understands and appreciates the risks involved, and is prepared to accept those risks as part of the spirit of the adventure. Odyssey Vessel Management Pty Ltd undertakes to deliver services with all due care however it is intended that passengers accept ultimate responsibility for any damage to or loss of personal property, or any illness, injury, or death.





14 RETARNE ST  
 ASHLEY QLD 4034  
 AUSTRALIA  
 PH: 617 3062 9900  
 FAX 617 3062 9488  
 CHMS

# "SEACAT 25"

DESCRIPTION
85 METRE PASSENGER CATAMARAN
GENERAL ARRANGEMENT GAS HULL
SCALE 1:100 SHEET 1 OF 1 DWG NO 10410
DATE JUL 12 BY WAW CAGS DESIGN

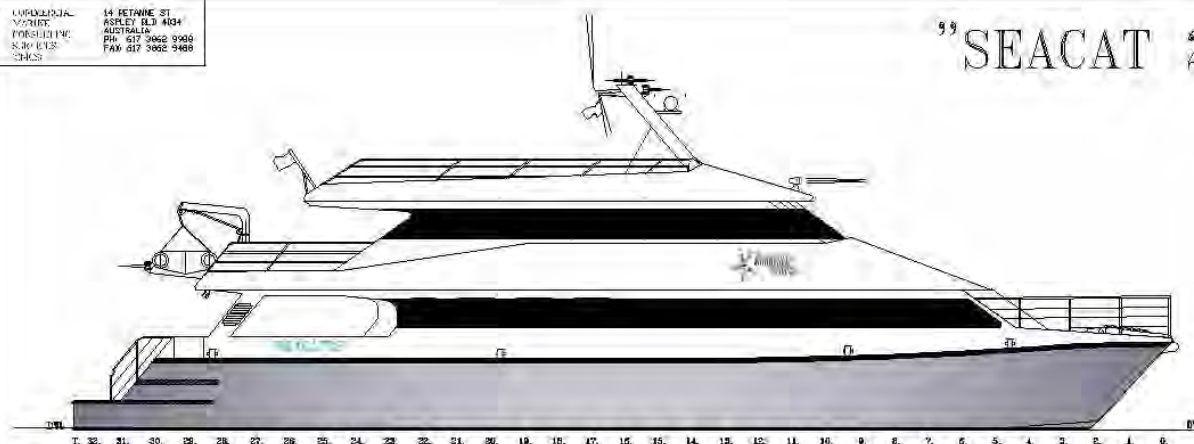
COPYRIGHT

## PRINCIPAL DIMENSIONS

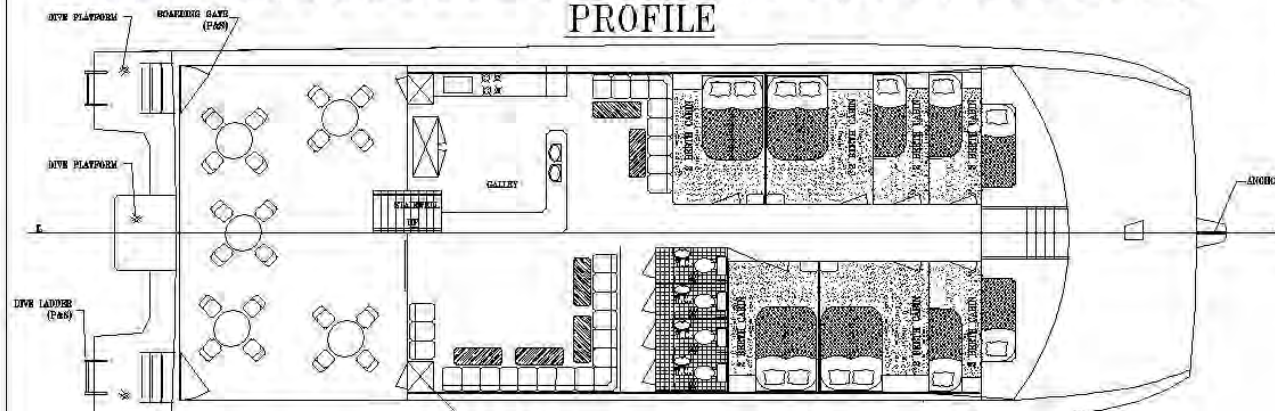
LENGTH (LOA)	24.80 METRES
LENGTH (USL)	23.81 METRES
LENGTH (LWL)	22.95 METRES
BEAM	8.97 METRES
DEPTH	2.54 METRES
DRAFT (LOADED)	1.85 METRES

## GENERAL NOTES

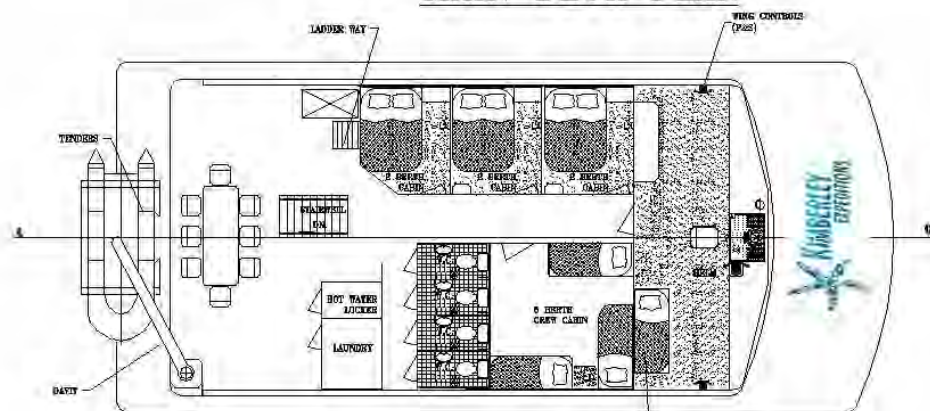
1. NAVIGATION LIGHTS SHALL COMPLY WITH THE INTERNATIONAL REGULATIONS FOR PREVENTION OF COLLISIONS AT SEA
2. THE MINIMUM FREEING PORT AREA IN BULKWARK ENCLOSED DECKS SHALL COMPLY WITH THE REQUIREMENTS OF THE MARINE AUTHORITY REQUIREMENTS.
3. HANDRAILS AND BULKWARKS SHALL BE OF 1000 MM MINIMUM HEIGHT THE OPENING BELOW THE LOWEST HANDRAIL COURSE SHALL NOT EXCEED 230 MM, THE OTHER COURSE OPENINGS SHALL NOT EXCEED 230 MM.
4. LIFE SAVING APPLIANCES SHALL BE IN ACCORDANCE WITH THE REQUIREMENTS OF THE USL CODE.



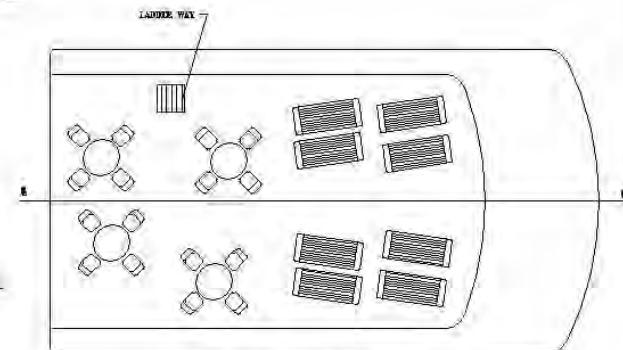
## PROFILE



## MAIN DECK PLAN



## BRIDGE DECK PLAN



## SUN DECK PLAN



## *Kimberley Wildlife Expedition Cruises*

Richard Costin and Annabelle Sandes are naturalists, photographers, filmmakers and guides, who as Kimberley Whale Watching, have been studying, photographing, filming and researching the distribution and behaviour of the Breeding Stock D, or Group IV population of Humpback whales for the past ten years. Richard has an encyclopedic knowledge of the coastline, tides and currents, with many years of experience as a tour director and guide in the charter boat industry on the Kimberley coast. Annabelle is an artist and photographer with extensive experience in hospitality, having spent six years running a Wilderness Lodge on the Gibb River Road. Annabelle has been involved with whale research with Richard since 2006, and together they have led passengers on cruises up the Kimberley coast since 2009. After many years living in Broome, they now divide their time between the Kimberley coast and northern Tasmania.

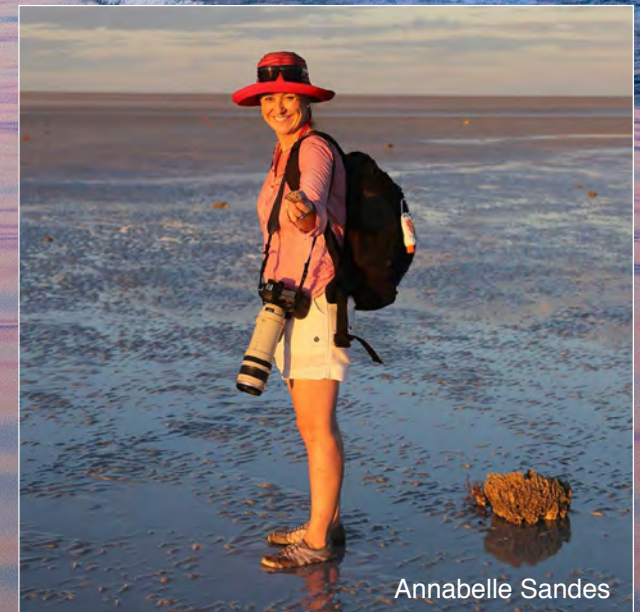


Richard Costin

## *Kimberley Expeditions*

Kimberley Expeditions, founded by Nick and Lorie Linton, has been providing world class Kimberley expeditions for the past 14 years. Their aim is provide a realistically priced cruise through our magnificent Kimberley Wilderness. With a fresh approach and new itinerary, you can view all the best of the magnificent Kimberley at a reasonable price.

The professional and caring crew of the very comfortable 27m catamaran, MV Oceania, are dedicated to showing you the very best the Kimberley has to offer in safe and relaxed surroundings. Kimberley Expeditions is the best valued nature based Australian expedition cruise company, offering Kimberley cruises from Darwin to Broome and Broome to Darwin. Kimberley Expeditions offers its guests a small ship expedition, providing guests aboard the vessel just the right mix of comfort and adventure along with unforgettable locations and scenery for a very affordable price. Experience the cruise of a lifetime....join the Oceania crew and let Nick and Lorie's 14 years of Kimberley Cruising experience show you the best the Kimberley has to offer without the TOP END price tag.



Annabelle Sandes





## CONTACT US

[kimberleywhales@bigpond.com](mailto:kimberleywhales@bigpond.com)

PO BOX 78  
LONGFORD TAS 7301  
0409 886 350

[www.kimberleywhales.com.au](http://www.kimberleywhales.com.au)

