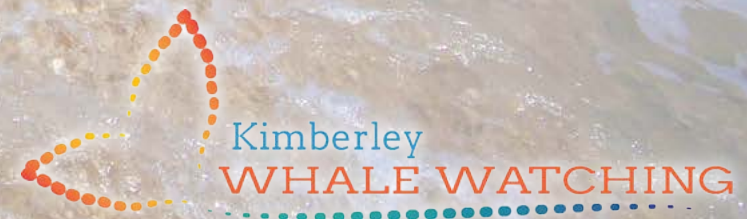


2014 Kimberley Coast



WILDLIFE EXPEDITION CRUISES

WWW.KIMBERLEYWHALES.COM.AU



Join Kimberley Whale Watching and Kimberley Expeditions for the trip of a lifetime on the rugged and remote Kimberley coast, as we explore the Kimberley's islands and reefs, surrounded by the world's largest Humpback whale population.

This trip focuses on the Kimberley's amazing wildlife, including huge colonies of shorebirds and seabirds, Humpback whales, dolphins and other cetaceans, turtles, seasnakes, manta rays and magnificent corals and marine life. This seven day trip offers exceptional value (from \$3,000 pp twin share), including a seaplane transfer and scenic flight from Broome to Adele Island.

Adele Reef

The Kimberley coast is a marine area of global importance, recognized as being amongst the 3.8% least impacted oceans worldwide. Surrounding the thousands of islands that comprise the Buccaneer and Bonaparte Archipelagos are fringing reefs rich in corals and other marine organisms. The outer islands are important breeding grounds for a variety of seabirds and turtles, and the entire area is rich in cetaceans,

including the recently discovered Dwarf Spinner dolphin and the elusive Australian Snubfin dolphin. On this voyage of discovery you'll visit areas rarely visited by other charter boats, including the Lacepede Islands and Adele Island, both significant bird breeding colonies, Montgomery Reef (Australia's largest

inshore reef), Turtle Reef and the extensive Adele, Churchill and Mavis and Beagle Reefs. These offshore islands are linked to the spectacular bays of the Buccaneer Archipelago - including Dugong Bay and the iconic Horizontal Waterfalls in Talbot Bay - by the Kimberley coast's massive tides.



Trip Schedules

5 - 11 September 2014

Cruise/ fly Broome to Adele Island (float plane Adele Island to Broome)

11 - 17 September 2014

Fly/cruise Adele Island to Broome (float plane Broome to Adele Island)

Adele Reef

Itinerary

Day 1

8am - Depart Broome for a leisurely steam up the Dampier Peninsula to Beagle Bay, watching for Humpback whales, turtles, seasnakes and dolphins. In the afternoon you'll enjoy a walk on the beach at Beagle Bay. Overnight on Reef Prince at Beagle Bay.

Day 2

Depart Beagle Bay at dawn for the Lacepede Islands where we'll enjoy a walk on the beach with views of nesting seabirds and young chicks. From the beach you'll see Green Turtles (Chelonia mydas) mating in the surf. In the afternoon we'll steam past Lord Mayor Shoals, a magnet for whales and feeding seabirds, then past Cape Leveque and Cafferelli Island, for a night steam to beautiful Myridi Bay.





Day 3

Wake to beautiful scenery at Myridi Bay in Yampi Sound, followed by a liesurely cruise through the islands of the Buccaneer Archipelago to Dugong Bay, where we'll cool off with a swim in a stunning freshwater pool. In the afternoon there's the opportunity for birdwatching or a spot of fishing, and an evening sightseeing cruise through the mangrove communities that line Dugong Bay. Overnight in Dugong Bay.

Turtle Falls, Dugong Bay

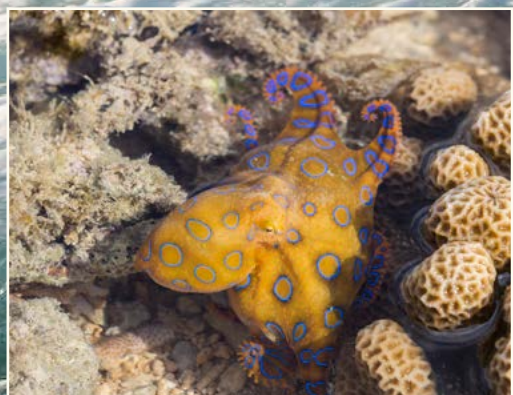
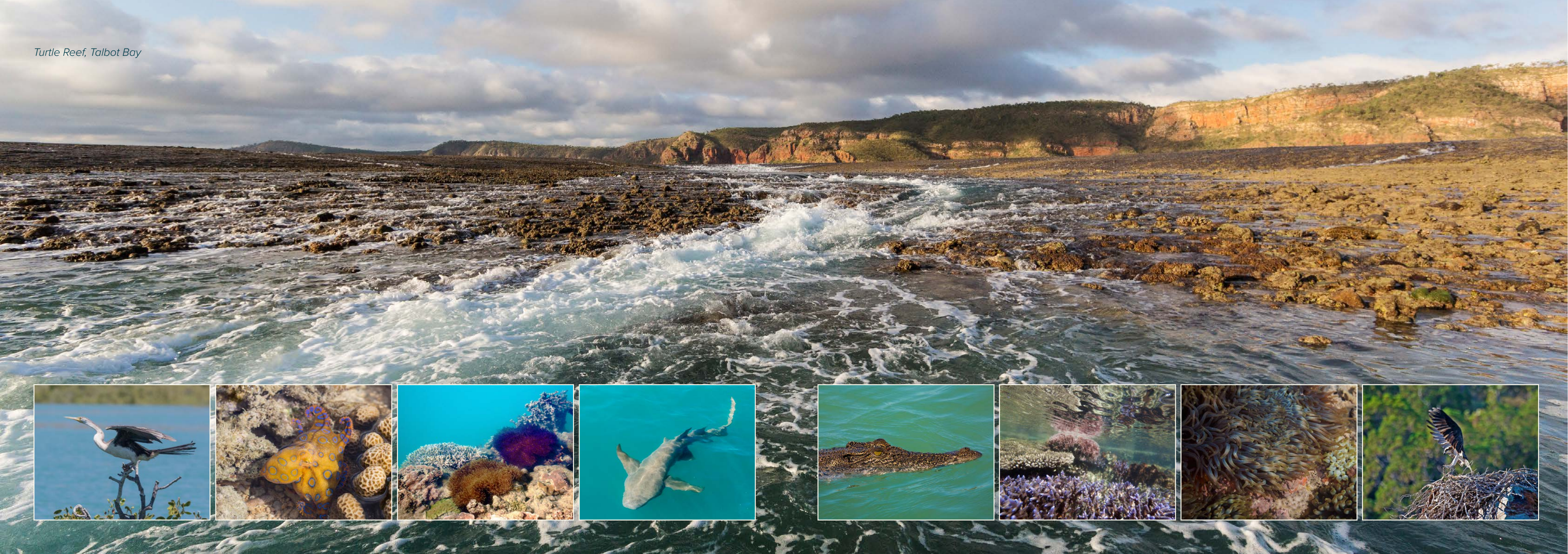


Day 4

We will cruise around to the iconic Horizontal Waterfalls, where you'll enjoy an exciting ride through "The Gaps" on a fast boat, followed by a scenic cruise up Cyclone Creek to view awe inspiring geological formations. In the afternoon we'll explore Turtle Reef, one of the jewels of the Kimberley coast, replete with clams, sponges, hard and soft corals. Overnight at Turtle Reef or Kingfisher Island.

Horizontal Waterfalls, Talbot Bay

Turtle Reef, Talbot Bay



Montgomery Reef, Collier Bay

Day 5

Depart Turtle Reef early in the morning and head to the Traverse Islands, then on to Montgomery Reef, Australia's largest inshore reef which appears to rise from the ocean on a falling tide. We'll explore gutters filled with turtles and fringed with corals, then steam to Macleay Island where we'll enjoy a beach walk before steaming out to Adele, watching for whales and birds en route. Overnight at Adele Island.



Adele Island, Indian Ocean

Day 6

Wake up at Adele Island for an early breakfast before embarking on an amazing birdwatching expedition on the island. You will see thousands of migratory shorebirds lining the beaches, along with vast flocks of seabirds including Masked, Brown and Red Footed Boobies, Common Noddies, Roseate and Bridled Terns, Pied Cormorants and Lesser Frigate Birds. After lunch we'll explore the extensive reefs surrounding the island, and snorkel in a sheltered lagoon, followed by evening drinks on an isolated sandbank.



Shorebirds, Adele Island





Seabirds feeding to the north of Adele Island

Day 7

Watch a glorious sunrise over Adele Reef as the seabirds stream out to their feeding grounds to the north. There's plenty of time for a leisurely breakfast before being transferred to the float plane for a scenic flight across the Buccaneer Archipelago, down the Dampier Peninsula and back to Broome. Keep your eyes open for Humpback whales. Arrive in Broome late morning.

This itinerary is subject to change. The skipper will customize your cruise depending on weather and tidal conditions.



Beach, Adele Island



Reef Prince

Mid deck offers a choice of 12 cabins. Cabins range from twin share bunks to deluxe doubles with en-suites. All cabins are air conditioned, with storage cupboards, DVD players, and personal fridges.

Main Deck: Our cabins are separated from the dinette area to ensure you have plenty of quiet time. Main deck cabins have a choice of double or solo cabins, all with DVD players, storage and shared toilets, and showers aplenty to cater for all guests.

Reef Prince's spacious open dining room provides bar facilities and a place to relax and take in the spectacular passing scenery. The lounge area is an excellent place to catch up on some reading whilst enjoying a fresh cappuccino, or make a selection from our choices of teas, chai or hot chocolate.

Reef Prince is equipped with onboard desalinators so there is always plenty of fresh water for bathing and drinking. Our 10m expedition vessel is able to travel up the smaller creeks and tributaries as she can carry all of our guests in comfort, safety and out of the Kimberley Sun. With comfortable shade cover and an onboard toilet, she has two quiet motors that will ensure you don't miss a word of the naturalist's tour. Access is made easy with a ramp, stairs and plenty of hand rails.



MV Reef Prince carries smaller expedition vessels, which allow guests to choose from a wide variety of activities available such as bush walking, touring waterfalls and gorges, beach picnics and sunset drinks, fishing, mud crabbing, turtle spotting, and on our Rowley Shoals expeditions; scuba diving and beach walking.

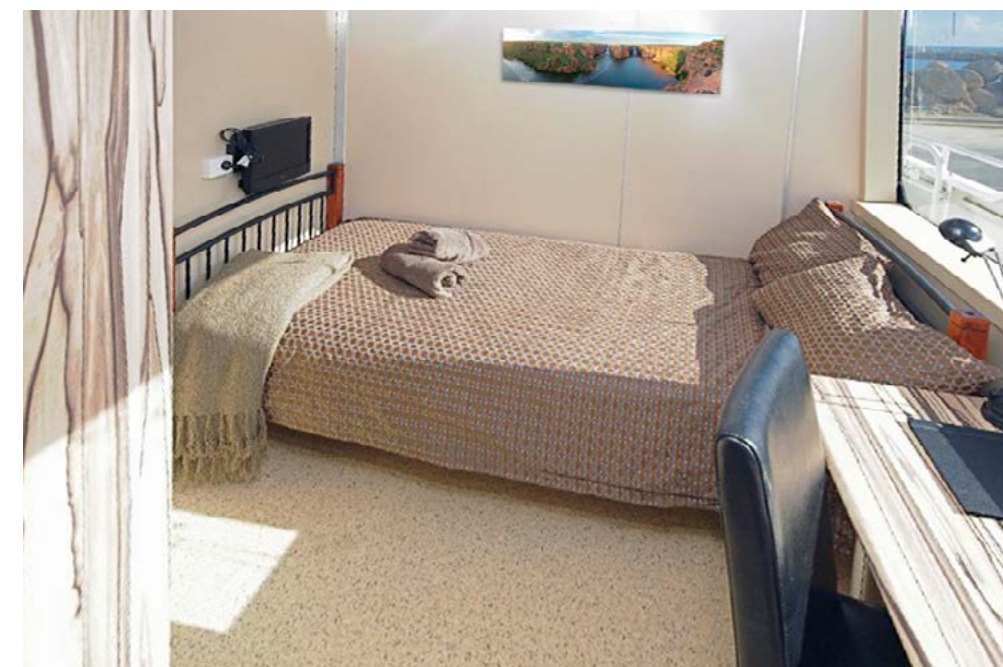
FOOD AND DRINKS

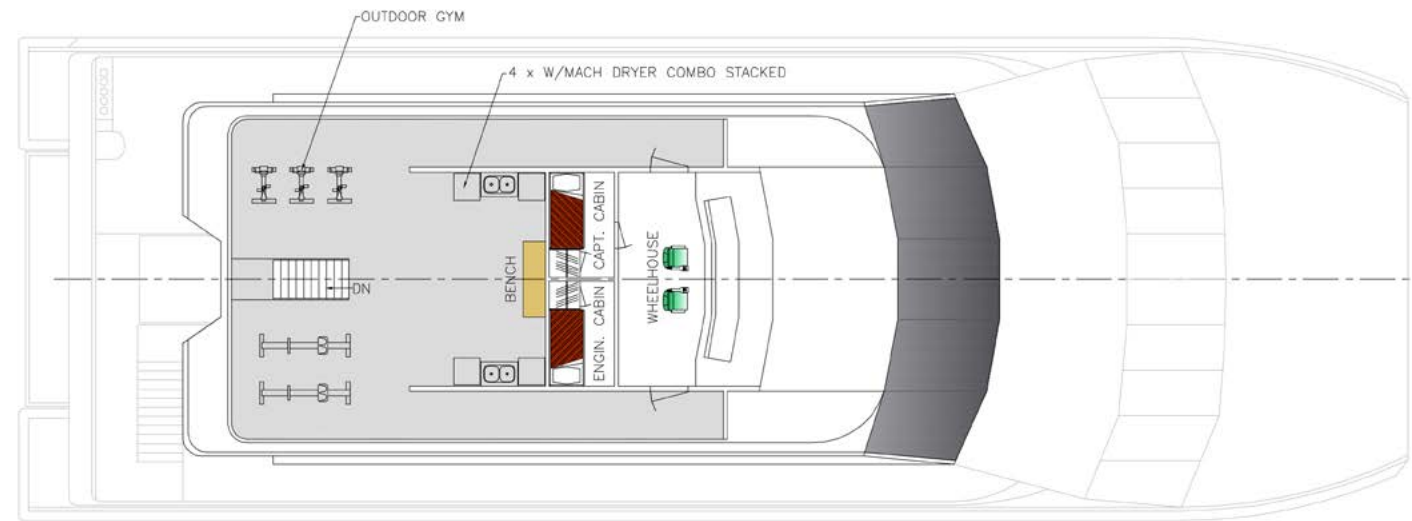
As you'd expect we provide 24hr coffee, hot chocolate and a selection of teas. Alcoholic beverages are available from our bar at very reasonable prices. We stock several beers, both mid and full strength, champagne, premixed sprits and a selection of nice house wines with a focus on our lovely Margaret River Wine Region. Let us know what you might like and we'll make sure we have plenty at hand.

Our meals are based on healthy local produce and fresh seafood wherever possible (with a light smattering of extremely tasty irresistible desserts that may not be so healthy). Please let us know if you have any dietary requirements upon final payment.

TRAVEL INSURANCE

Medical extractions from remote locations can be difficult and costly. Kimberley Expeditions strongly recommends you have comprehensive personal travel insurance to cover all emergency evacuation, medical situations and late cancellation refunds.





WHEELHOUSE DECK



MID DECK

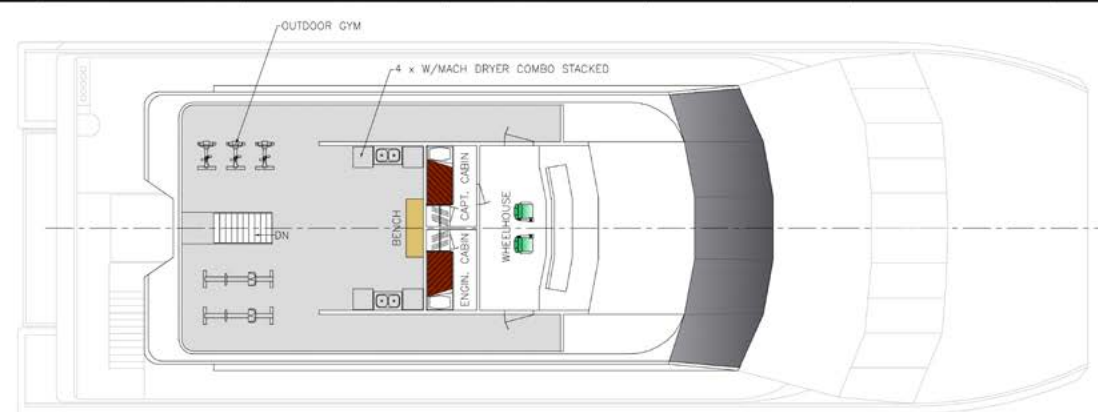
Category 1 : Solo interior king single bunks with en-suites, writing desk, personal DVD players, air conditioning, storage cabinet and bar fridge. Cabins 15 & 16 are on the mid deck. *Second person rates are available at half of the solo rate (on the top bunk).

Category 2: Solo exterior king single bunks, with personal DVD players, large viewing windows, air conditioning, storage cabinet and bar fridge Cabins 1, 2, 11 & 12 are on the main deck. Cabin 19 & 24 are on the mid deck. *Second person rates are available at half of the solo rate (on the top bunk).

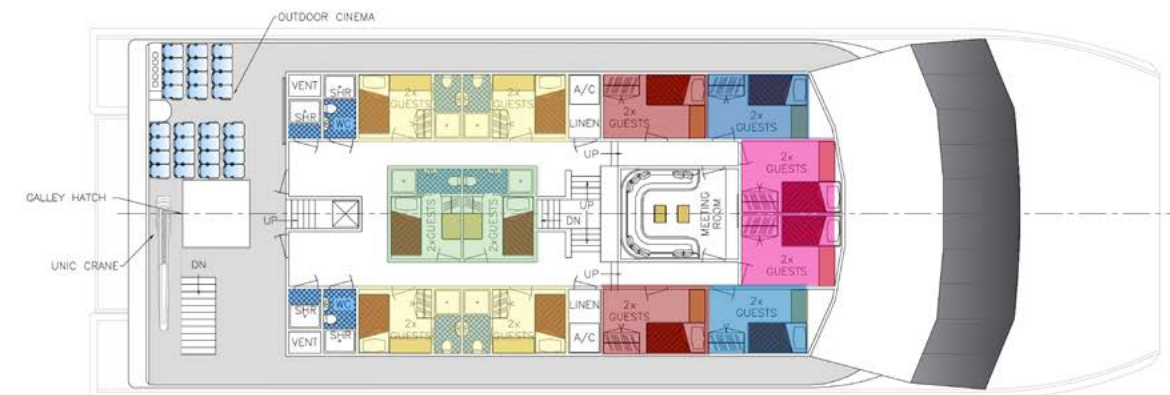
Category 3 : Exterior double bed with DVD players, air conditioning, storage cabinet and bar fridge. Cabins 20 & 23 are on the mid deck

Category 4 : Exterior double bed with en-suites, writing desk, large viewing windows, DVD players, air conditioning, storage cabinet and bar fridge. Cabins 13,14 and 17,18 are on the mid deck

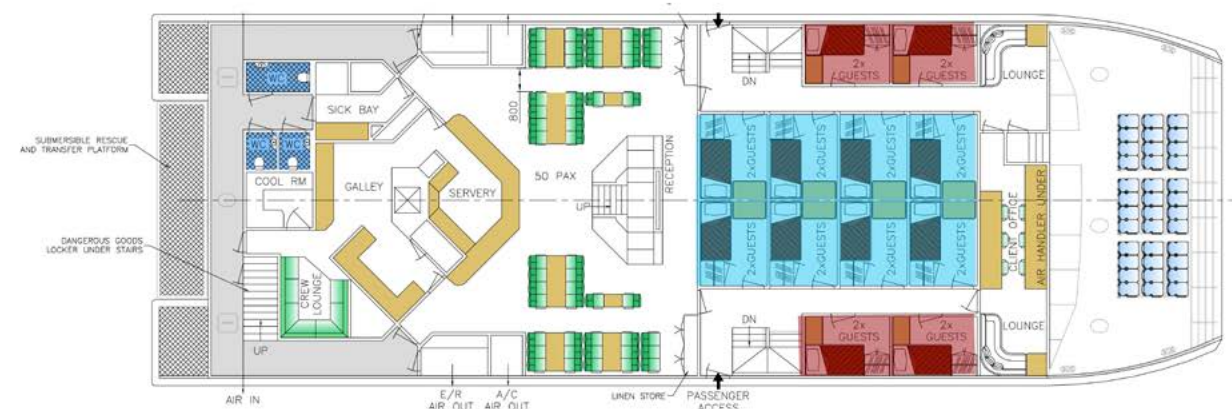
Category 5 : Interior double bed, with DVD player, air conditioning, storage cabinet and bar fridge. Cabins 3, 4, 5, 6, 7, 8, 9, 10 are on the main deck.



WHEELHOUSE DECK



MID DECK



MAIN DECK

Tariff

Category 1 - <i>2 cabins</i>	Interior cabin, en-suite	\$6255 pp	single occupancy
		\$3657.50 pp	twin share
Category 2 - <i>6 cabins</i>	Exterior cabin, bunks	\$4840 pp	single occupancy
	no en-suite	\$3000 pp	twin share
Category 3 - <i>2 cabins</i>	Exterior double, no	\$4840 pp	single occupancy
	no en-suite	\$4,500 pp	twin share
Category 4 - <i>4 cabins</i>	Exterior double, en-suite	\$5212.50 pp double	
Category 5 - <i>8 cabins</i>	Interior cabin, double bed	\$4840 pp	single occupancy
	no en-suite	\$4350 pp	twin share

Dugong Bay

Terms & Conditions

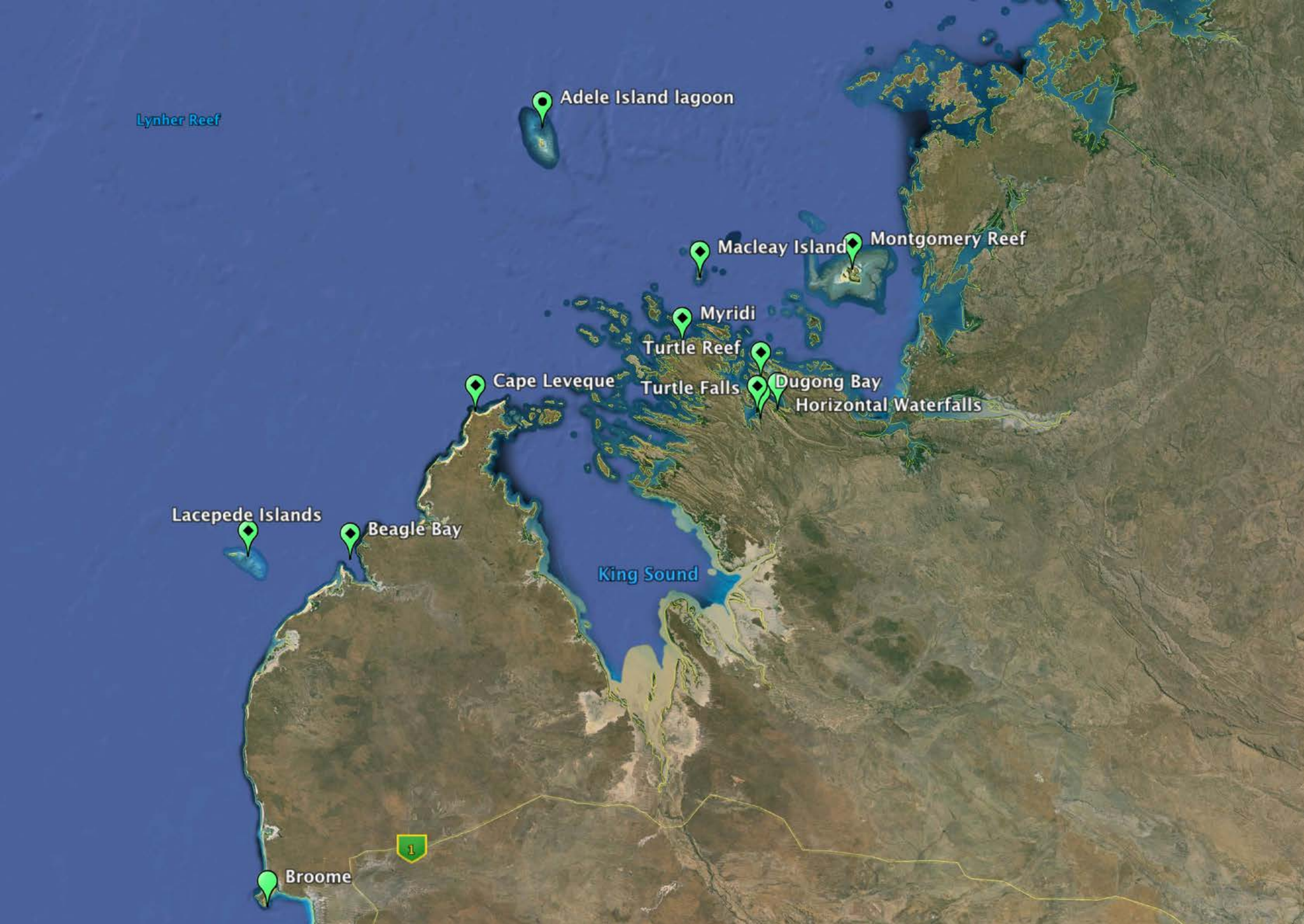
* 30% non-refundable deposit to be paid to confirm your reservation.

Included in your cruise fare are accommodation as booked on board, cruise transportation, all meals onboard, facilities, port & handling charges, excursions and tender transfers. Govt. Fees & Taxes.

* 70% (being the balance) due 60 days before departure.

* If cancellation occurs at the operator's discretion (i.e. due to weather) a full refund will be given.





About Us

Kimberley Expeditions was founded by Nick and Lorie Linton, who have been providing world class Kimberley expeditions for the last 12 years. Nick and Lorie started cruising the Kimberley in 2001, and recognized the need for a well priced expedition to the Kimberley region. By running an efficient family business they have managed to keep their prices down.

Richard Costin and Annabelle Sandes are Broome based naturalists and photographers who are passionate about the Kimberley coast, and have spent the past seven years studying Breeding Stock D, the largest population of Humpback Whales in the world.

Richard first arrived in the Kimberley in 1976 and has an unbridled passion for the coast and interior. For nearly 40 years he has lived and worked in the Kimberley, walking and exploring vast tracts of untouched wilderness by himself. An accomplished stills photographer and documentary film maker, Richard has released two beautiful documentary DVDs; "Heart of the Kimberley – Wildwater Country" and "Heart of the Kimberley – Birds of Paradise". In June 2013 Richard released a re-edited version of "Wildwater Country".

A true bushman, Richard also works as a naturalist on various Kimberley charter boats, sharing his extraordinary knowledge of the Kimberley coast.

Annabelle Sandes has lived in the Kimberley for the past thirteen years. Annabelle spent six years running "Mt Hart", a wilderness lodge on the Kimberley's remote Gibb River Road, where she combined her love of cooking with her passions for natural history, wilderness and wildlife.

Based in Broome for the past seven years, she has concentrated on painting, photography, filming and natural history, leading annual whale survey expeditions with Richard on the Kimberley coast. Annabelle has exhibited paintings and photographs in Sydney, Melbourne, Broome and the UK.



Your Guides for this expedition - Annabelle Sandes and Richard Costin



Kimberley Whale Watching
PO BOX 7139
Broome WA 6725
0409 886 350
info@kimberleywhales.com.au
www.kimberleywhales.com.au

[Enquire online](#)

Kimberley Expeditions
PO BOX 1280
Dunsborough WA 6281
1300 874 707
info@kimberleyexpeditions.com.au
www.kimberleyexpeditions.com.au